

EWHA WOMANS UNIVERSITY CAMPUS CENTER
Seoul, Korea
international competition, winning project
February 2004
Inauguration on April 29th 2008

Client Ewha Campus Center Project T/F, 328 Jin-Seon-Mi Hall, Ewha Womans University, 11-1 Daehyundong, Seodaemun-gu, Seoul 120-750, Korea.

Contact Prof. Miseon Kang / Prof. Yoonhie Lee,
tel.: +82 (0)2 3277-3472,
Email : archma@ewha.ac.kr; Dominique Perrault
Architecture, Paris

Partner Baum architects, Seoul, Korea

Engineers Perrault Projets, Paris (architectural engineering); VP&Green Ingénierie, Paris (structural engineers); HL-PP Consult, Munich (Building services), Jean-Paul Lamoureux (acoustic); Rache-Willms, Aachen (façades)

Consultants Jeon and Lee Partners, Séoul (structural engineer), HIMEC, Séoul (mechanical engineer), CG E&C, Séoul (civil engineer), CnK Associates, Séoul (Landscape)

Location 11-1 Daehyundong, Seodaemun_gu, Soeul 120-750, Korea.

Site surface 19,000 m²

Built surface 70,000 m²

Built volume 350,000 m³

Landscaping 31,000 m²

Start of conceptual design 2004

Construction start 2005

General contractor Samsung Corporation

Program «The Campus Valley».

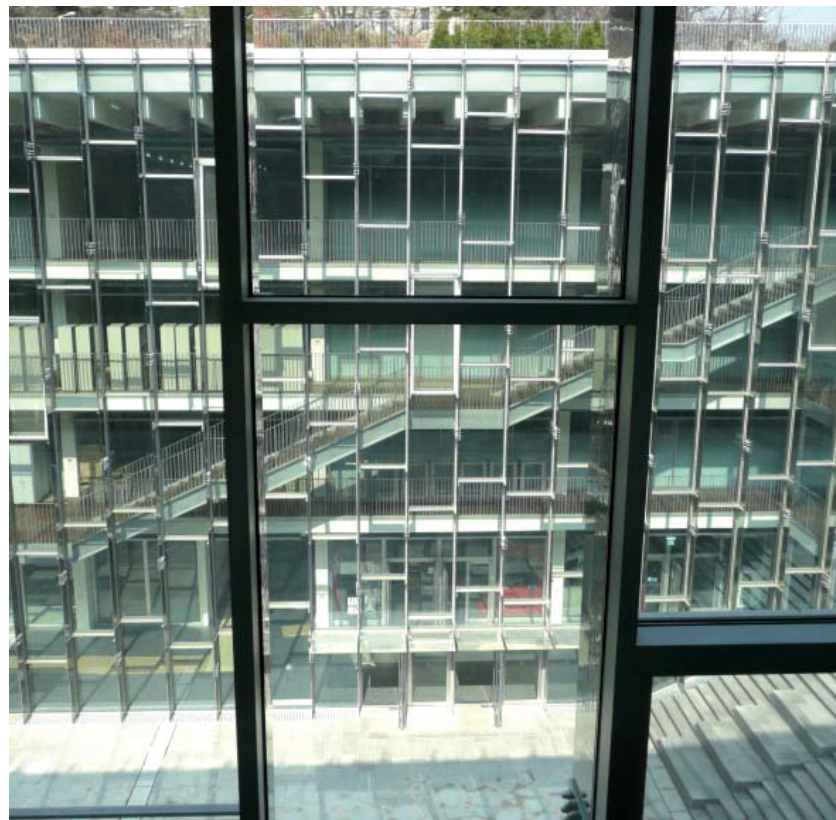
The establishment of a campus center for about 22,000 students.

- academic program: classrooms and library
- sport-term project space, student activity support
- administration

- commercial area, sports and parking area.

Above and below the land previously occupied by Ewha Square and the athletic field the new «Campus Valley» provides both Ewhaians and prospective female leaders with much-needed space for continuing education and student services. The campus centre is designed to offer a new sense of direction for higher education in the 21st century. It establishes organic relations between the center and surrounding areas of campus as well as between above ground and underground spaces; and will serve to redefine access to the campus from the main road Jung Mun.

Dominique Perrault Architecture
6, rue Bouvier
75011 Paris, France
Tel. +33 1 44 06 00 00
Fax +33 1 44 06 00 01
www.perraultarchitecture.com
dpa@d-p-a.fr



EWHA CAMPUS COMPLEX

EWHA WOMANS UNIVERSITY
Seoul, Korea
2004 - 2008

DPA - Dominique Perrault Architecture

Press release

Official Inauguration - 29 April 2008





Ewha Womans University Inauguration on April 29th 2008

Flying is the best way to reach the shores of Seoul Ewha University's new building (founded in 1886, Ewha welcomes 22,000 female students and is ranked as one of the best universities in the world), thought and realised by Dominique Perrault, as a result of an international architecture competition organised in 2003, and inaugurated on April 29th 2008.

A landscape then, more than an architecture work, located in the midst of Seoul's university area. A campus valley where nature, sport grounds, event locations and educational buildings mix, intermingle and follow one another. A long asphalted strip, delineated at one end by a race track, and, completely surrounded by nature. Arranged nature where pear trees and topiary reign. Black asphalt, red race track, green nature and finally the white brightness of a valley appears. A valley, which is bravely drawn in the ground, slides down along a gentle slope. At the other end, the slope becomes a huge stairway which can be used as an open air amphitheatre if necessary.

At the very heart of the valley, a dreamlike immersion takes place. Opposed to the outdoor world, a subtle and serene universe appears suddenly. Classrooms and libraries, amphitheatres and auditoriums, shops and movement... Everything follows up with a constant natural light.

Perrault is prone to buried, excavated, nestled places (the *French National Library* in Paris, the *Velodrome and Olympic swimming pool* in Berlin, both built, or the studies for the *Kansai Library* in Japan and the *Cultural Centre* in Santiago de Compostela, Spain...) Perrault has the desire, physically speaking, to appropriate the territory, to mingle the constructed material with the ground, the desire to exploit to its paroxysm the idea that "concept and matter have to grapple one with another".

At Ewha University, Perrault puts one more time in action: words (idea, concept, abstraction, geometry, strategy, tension, fusion, freedom, simplicity, evidence...), principles (physics, mechanics, dimension...) and commitments (urban concerns, creation of a location and not only of a building, refusal of formalism, and disappearance of architecture...) which best qualify his architecture.

With the forthcoming inauguration of Seoul Ewha Womans University, Dominique Perrault attests his intense international activity (*Habitat Hotel* in Barcelona, achievement in May 2008, *NH Hotels* in Milan, November 2008, the *European Court of Justice* in Luxembourg, December 2008, the *Tennis Stadium* in Madrid, May 2009, *Donau-City Towers* in Vienna, 2010, *Theatre Mariinsky II* in Saint-Petersburg, 2010...)

Don't miss the large monographic exhibition about Dominique Perrault's work, organised by Centre Pompidou in Paris from 10 June to 22 September 2008.

